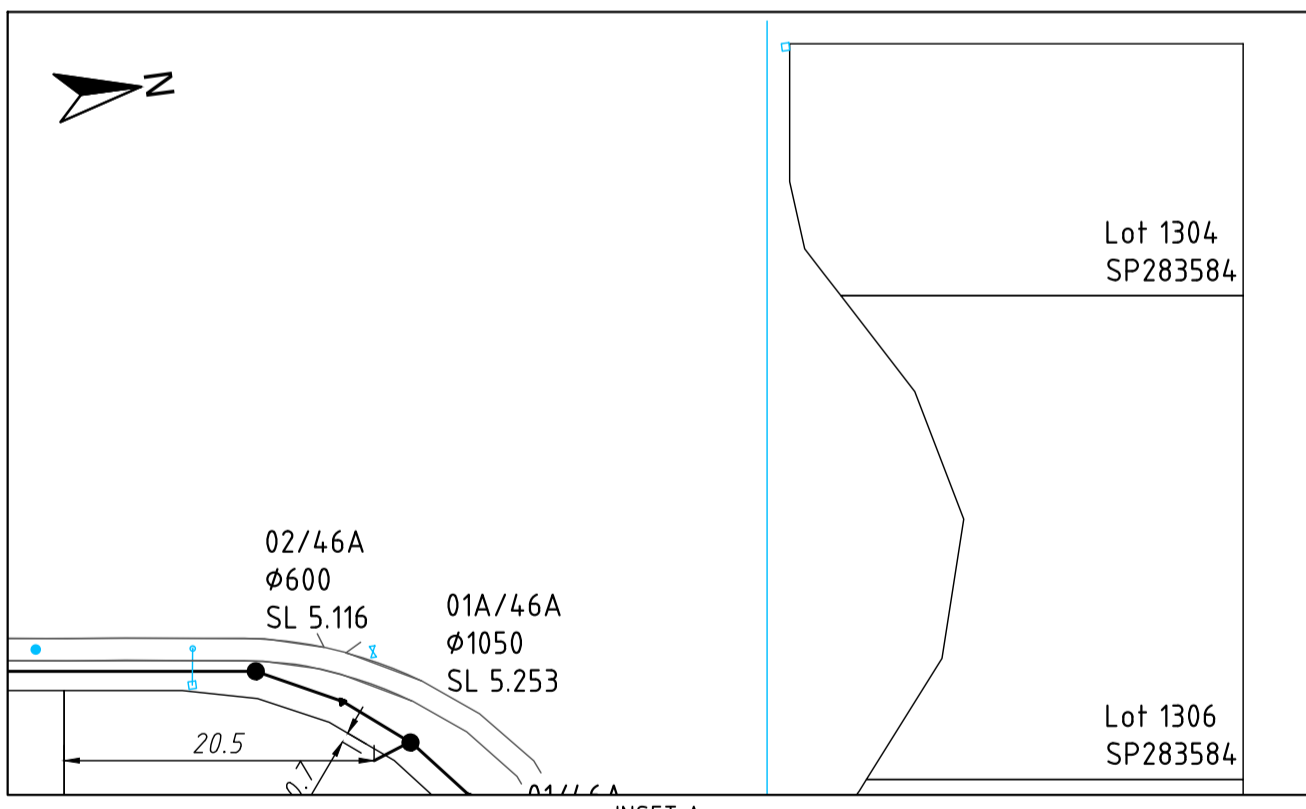
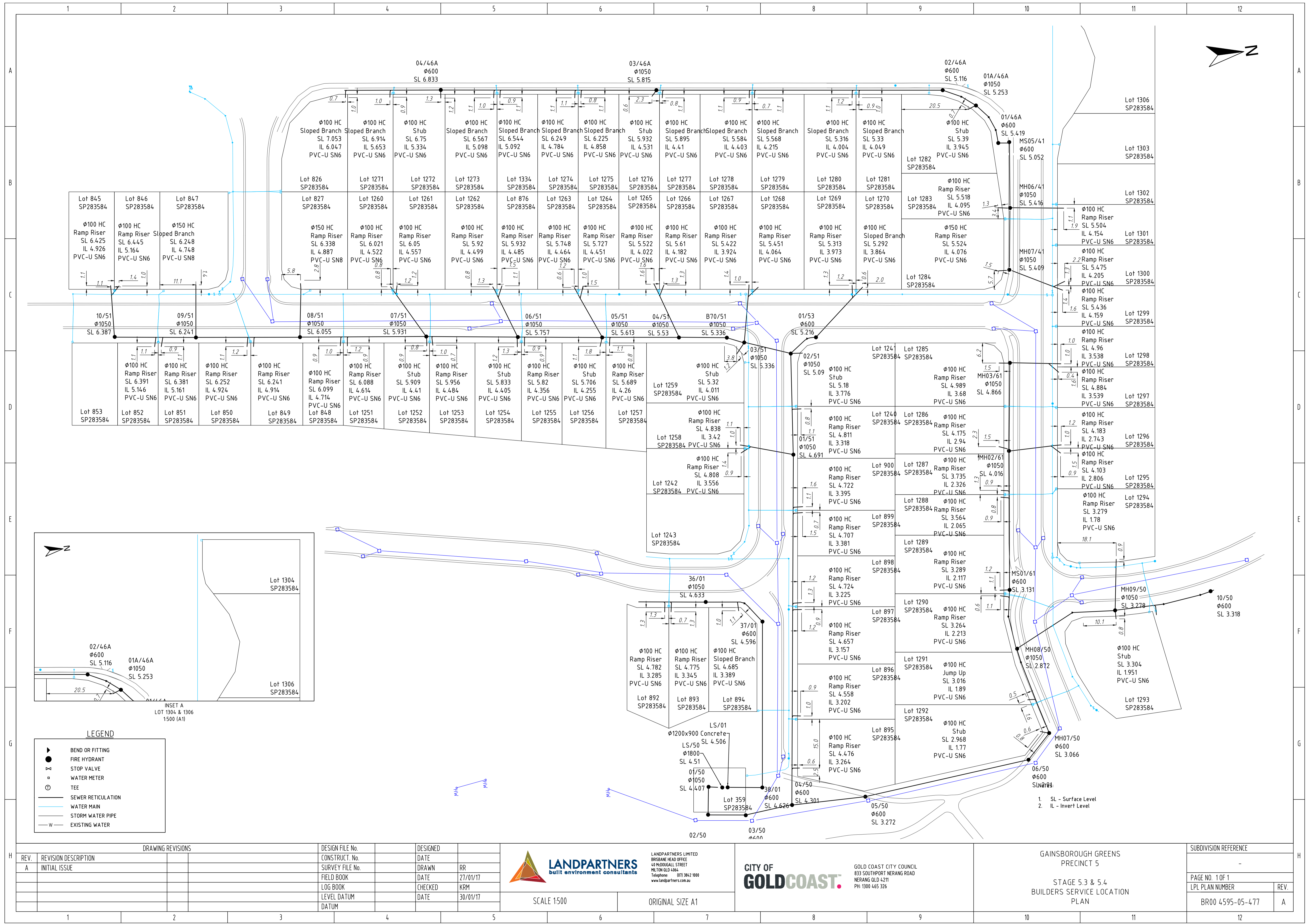


- Notes:
1. SL - Surface Level
  2. IL - Invert Level

DRAWING REVISIONS		DESIGN FILE No.	DESIGNED	 <b>LANDPARTNERS</b> build environment consultants	LANDPARTNERS LIMITED BRISBANE HEAD OFFICE 40 HOODGALL STREET MILTON QLD 4064 Telephone: (07) 3842 1000 www.landpartners.com.au	<b>CITY OF GOLDCOAST</b> GOLD COAST CITY COUNCIL 833 SOUTHPORT NERANG ROAD NERANG QLD 4211 PH: 1300 465 326	SUBDIVISION REFERENCE	
REV.	REVISION DESCRIPTION	CONSTRUCT. No.	DATE					
A	INITIAL ISSUE	SURVEY FILE No.	DRAWN	RR			STAGE 2 BUILDERS SERVICE LOCATION PLAN	
		FIELD BOOK	DATE	27/01/17			PAGE NO. 1 OF 1	
		LOG BOOK	CHECKED	KRM			LPL PLAN NUMBER	REV.
		LEVEL DATUM	DATE	30/01/17			BR00 4595-05-476	A
		DATUM						

SCALE 1:500

ORIGINAL SIZE A1



**LEGEND**

- BEND OR FITTING
- FIRE HYDRANT
- STOP VALVE
- WATER METER
- TEE
- SEWER RETICULATION
- WATER MAIN
- STORM WATER PIPE
- EXISTING WATER

REV.	REVISION DESCRIPTION	DESIGN FILE No.	DESIGNED
A	INITIAL ISSUE	CONSTRUCT. No.	DATE
		SURVEY FILE No.	DRAWN
		FIELD BOOK	DATE
		LOG BOOK	CHECKED
		LEVEL DATUM	DATE
		DATUM	

DESIGNED	DATE
DRAWN	RR
DATE	27/01/17
CHECKED	KRM
DATE	30/01/17

**LANDPARTNERS**  
build environment consultants

LANDPARTNERS LIMITED  
BRISBANE HEAD OFFICE  
40 REGINALD STREET  
MILTON QLD 4064  
Telephone: (07) 3842 1000  
www.landpartners.com.au

SCALE 1:500 ORIGINAL SIZE A1

**CITY OF GOLD COAST**

GOLD COAST CITY COUNCIL  
833 SOUTHPORT NERANG ROAD  
NERANG QLD 4211  
PH: 1300 465 326

GAINSBOROUGH GREENS  
PRECINCT 5

STAGE 5.3 & 5.4  
BUILDERS SERVICE LOCATION  
PLAN

SUBDIVISION REFERENCE	
PAGE NO. 1 OF 1	REV.
LPL PLAN NUMBER	
BR00 4595-05-477	A